

Alupe University College

School of Education and Social Sciences

First Year Orientation – 2020/2021

Dean's Office

17th September, 2020

Office of the Dean SESS



Prof. Carolyne Omulando is the current Ag. Dean of the School of Education and Social Sciences

- To all the first year students (2020/2021), receive greetings from the School (which we refer to as “SESS”) at Alupe University College!
- During this orientation session, we wish on behalf of the entire School community to introduce SESS and help you get vital information with regard to all academic related matters, about the administrative organization, our faculty and the programmes offered in the School.
- As SESS’s first Dean, I am excited and proud to be part of this function and look forward to connecting with each one of you in the months and years ahead as you study at Alupe University College.
- SESS is one of the most vibrant Schools at Alupe University College and hosts the largest number of students.

Role of the Dean of School Office

- The Dean is the overall in charge of the School of Education and Social Sciences (SESS)
- Deals with coordination of **all** and **only** academic matters and issues related to the School through the SESS Chairs of Departments, the School Timetable and Examinations Office and the Academic advising office.
- Academic matters and issues include:
 - Teaching
 - Learning
 - Examinations (CATs and End of Semester Examinations)
 - Examination Results
 - Academic Advising

Programmes in the School

Seven programmes are offered in the School of Education and Social Sciences:

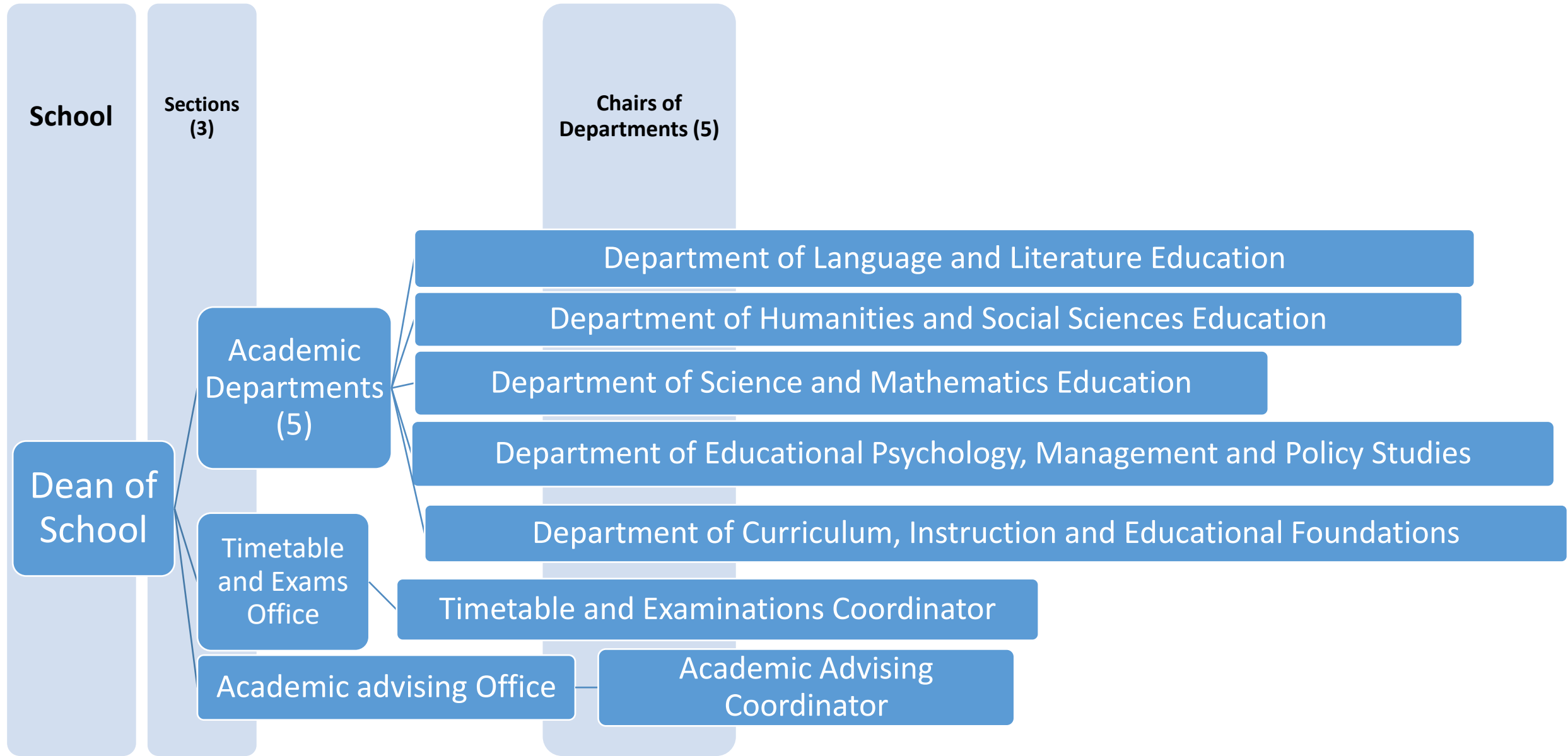
- Bachelor of Education (Arts) – Currently being offered
- Bachelor of Education (Science) – Currently being offered
- Bachelor Science (Counselling Psychology) – Currently not being offered
- Bachelor of Arts (Community Development) – Currently not being offered
- Diploma in Social Work – Currently being offered
- Diploma in Community Development – Currently being offered
- Post graduate Diploma in Education

NOTE: All these programmes admit students under the **Privately Sponsored Students Programme (PSSP)**

Bachelor of Education Programmes Requirements

SCHOOL/PROGRAMME	ADMISSION REQUIREMENTS	MODE OF STUDY
<p>Bachelor of Education (Science)</p> <p>Subjects on offer: Mathematics, Chemistry, Physics and Biology</p>	<ul style="list-style-type: none"> i. Minimum Mean Grade of C+ and above at KCSE OR ii. Applicants for B.Ed. (Science) MUST have at least Grade C [Plain] and above in Mathematics and C+ [plus] in the two prospective teaching subjects at KCSE Level. 	<p>Day Programmes</p> <p>Venue: AUC</p>
<p>Bachelor of Education (Arts)</p> <p>Subjects on offer: Mathematics, Geography, History, Religion, Business Studies, English, Literature and Kiswahili</p>	<ul style="list-style-type: none"> i. Minimum Mean Grade of C+ and above at KCSE OR ii. Applicants for B.Ed. (Science) MUST have C+ [plus] in the two prospective teaching subjects at KCSE Level. 	<p>Day Programmes</p> <p>Venue: AUC</p>

Organisational Structure of the School



Organisation of First Year Courses

- Courses are organised in 2 Semesters within an **academic year** (e.g. 2020/2021 is the current academic year) – **Semester One (16 weeks)** and **Semester Two (16 Weeks)**
- The courses are offered under two main categories:
 - **Common Courses** – Courses done by all first students
 - **Subject Courses** – each student selects **two teaching subjects** (least with a score of C+ Grade in each)
- Subject Areas are **divided into two**:
 - **Arts based** – English, Literature, Kiswahili, Religion, Geography, History, Business Studies and Mathematics
 - **Science Based** – Mathematics, Chemistry, Biology and Physics (Offered by School of Science)

NOTE: Business Studies courses (Offered by School of Business Economics, Human Resource and Development)

Subject Combinations for the Bachelor for Education Programmes

Bachelor of Education (Arts)

- Mathematics/Geography
- Geography/Kiswahili
- Geography/History
- Religion/Kiswahili
- Religion/History
- History/Kiswahili
- English/Literature
- Geography/Religion
- Business Studies/Geography
- Business Studies/Mathematics

Bachelor of Education (Science)

- Chemistry/Biology
- Chemistry/Mathematics
- Chemistry/Physics
- Physics/Mathematics
- Mathematics/Biology
- Biology/Mathematics

Course Registration

- Each student will be required to [register for all the courses they are taking each semester \(8 courses\)](#).
- A [course registration](#) form will be provided/uploaded on the website. Check, download it, fill in and submit it within the required time as you will be guided.
- Once you have registered, let us meet during our online classes that begin 28th September, 2020 – get a lap-top/iphone/ipad or any other gadget that can enable you connect for your online classes.

Career Opportunities for Bachelor of Education Programmes

The Programmes present significant prospects for career advancement for professionals as:

- School teachers
- School Administrators
- College instructors/tutors
- Lecturers
- Career advisors
- School/institution managers and administrators
- Local and county government education managers
- School text book authors and reviewers
- Education consultants
- School guidance and counselling officers
- Curriculum designers
- Education Policy makers

Lecturer and Course Details

Details of all the **Courses** on offer in the **First Semester** will be up loaded on the website

Details and **Contacts of all lecturers** who will be teaching you will be uploaded on the website

Refer to the Website for further information about the **Online Learning Management System**, School and all the five academic departments

Welcome to Alupe University College

School of Education and Social Sciences

Anchored in Excellence – Preparing leaders for today and tomorrow!!

THANK YOU